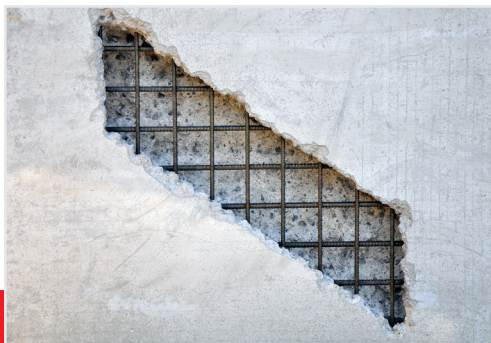


SMALL AND DESTINED FOR GREATNESS



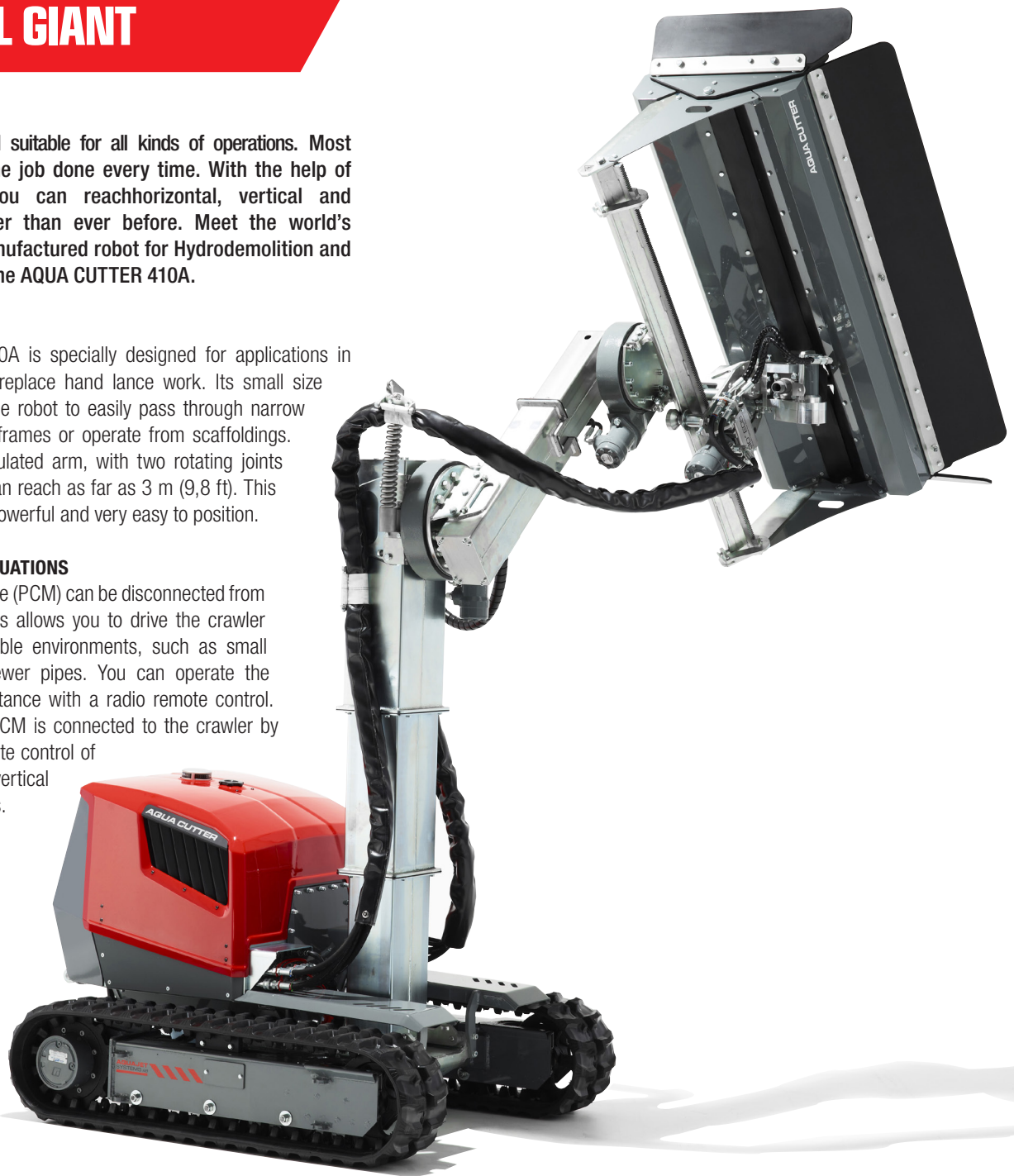
THE SMALL GIANT

It's small, compact and suitable for all kinds of operations. Most importantly, it gets the job done every time. With the help of an articulated arm you can reach horizontal, vertical and overhead areas easier than ever before. Meet the world's smallest standard manufactured robot for Hydrodemolition and industrial cleaning – the AQUA CUTTER 410A.

The AQUA CUTTER 410A is specially designed for applications in confined areas and to replace hand lance work. Its small size and low weight allow the robot to easily pass through narrow passages such as doorframes or operate from scaffoldings. The hydraulic and articulated arm, with two rotating joints and three extensions, can reach as far as 3 m (9,8 ft). This makes the robot agile, powerful and very easy to position.

CONTROL IN STICKY SITUATIONS

The power control module (PCM) can be disconnected from the tracked crawler. This allows you to drive the crawler into tight and inhospitable environments, such as small tunnels and flooded sewer pipes. You can operate the crawler from a safe distance with a radio remote control. In such situations the PCM is connected to the crawler by a cord, ensuring complete control of the robot in horizontal, vertical and overhead operations.



▶ Read more about this machine at aquajet.se



INNOVATIONS AND DESIGN

// CLASSIC CONTROL SYSTEM

If you choose the AQUA CUTTER Classic control system you'll get our patented ISC system – Intelligent Sensing Control, with no cables or electronic sensors outside the enclosed engine hood. You'll also get the 30° EDS roller that keeps a set distance between the nozzle and the concrete.

The classic control system makes it very easy to program the robot and all speeds are set manually with hydraulic valves. You can easily program and determine your operation width and area thanks to mechanical stoppers on the front roller beam.

// EVOLUTION CONTROL SYSTEM

If you choose the AQUA CUTTER Evolution control system you'll enable highly computerized robotic management for advanced operations. In addition, you'll get the 45° EDS roller that keeps a set distance between the nozzle and the concrete, without any water jet energy waste.

The Evolution control system allows you to program geometrical figures such as circles, triangles, squares and rhomboids. Today, it's the most sophisticated and flexible system on the market for Hydrodemolition robots.

// EDS - EQUAL DISTANCE SYSTEM

All our AQUA CUTTER robots feature our patented EDS system, short for Equal Distance System. The EDS keeps a preset distance from the nozzle to the concrete surface, regardless of the attack angle of the water jet. This is a major advantage. Standard systems without EDS make the water jet lose a lot of power before it hits the concrete.

// OSCILLATION SYSTEM

The stroke can be changed in a minute to adapt for the scope of the work. A shallow cut requires a longer stroke and a deep cut needs a short stroke. This allows you to get a higher removal rate and better cut results in all situations.



// RADIO REMOTE CONTROL

A radio remote control allows you to operate the AQUA CUTTER robot from a safe distance, wireless or with a hard wire. That's up to you and the operation at hand.



// DISCONNECTABLE PCM

The power control module (PCM) can be disconnected from the tracked crawler. This allows you to drive the crawler into tight and inhospitable environments, such as small tunnels and flooded sewer pipes.



You can operate the crawler from a safe distance with a radio remote control. In such situations the PCM is connected to the crawler by a cord, ensuring complete control of the robot in horizontal, vertical and overhead operations.

// ROBOT INSIDE POWER PACK

All our 410 and 710 robots will fit into our 23' Power Packs. All in one package ready to go to the worksite and no need for an extra trailer. Robot is also protected from unauthorized intrusion inside the power pack during the night.



// REMOVAL IN CORNERS

How do you reach corner areas where the wall and floor meet? Usually you need some kind of handheld trimming equipment. We have solved this problem in an ingenious way. With our robots you'll finish the job with only one overpass thanks to unique lance control and the EDS system. No hand lances. No adjustments. Perfect results.



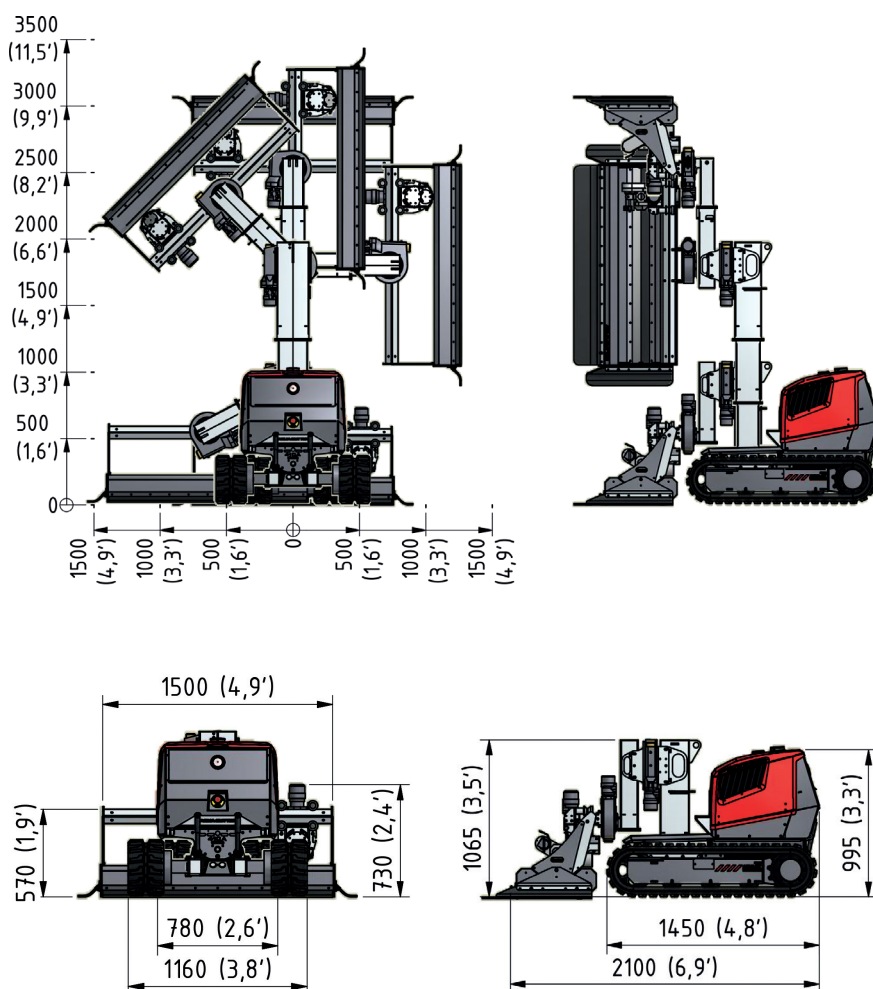
// NOZZLES

At Aquajet we use unique ceramic nozzles, specially designed for highly demanding operations and all kinds of Hydrodemolition applications. The lifespan of a nozzle is up to 300-350 hours depending on the water quality. In terms of efficiency, our nozzles are unbeatable.



aquajet.se

SPECIFICATIONS

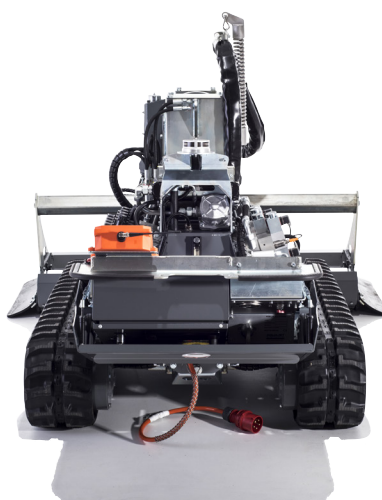


RELIABLE AND EASY SERVICE

Innovative design provides unrivalled ease of access for all maintenance jobs. This means less downtime with maintenance work and more time for actual work.

POP THE HOOD

The foldable back cover of our AQUA CUTTER robots offer total access for both daily maintenance jobs such as checking oil levels, and periodic service jobs such as oil and filter changes.



// TECHNICAL DATA CLASSIC

Total weight	1190 kg (2620 lb)
Length	2,1 m (6,9 ft)
Min. width	0,78 m (2,6 ft)
Track width	0,78-1,16 m (2,6-3,8 ft)
Min. height	0,99/1,07 m (3,2/3,5 ft)
Operating height	3 m (9,8 ft)
Side reach	1,3 m (4,3 ft)
Lance angle	± 30°
Working width	0-1,5m (0-4,9 ft)
Working width extended	0-3,0 m (0-9,8 ft)
Drive source	Electric engine 3 phase 5,5 kW 400 VAC 16A (other on request)

// TECHNICAL DATA EVOLUTION

Total weight	1190 kg (2620 lb)
Length	2,1 m (6,9 ft)
Min. width	0,78 m (2,6 ft)
Track width	0,78-1,16 m (2,6-3,8 ft)
Min. height	0,99/1,07 m (3,2/3,5 ft)
Operating height	3 m (9,8 ft)
Side reach	1,3 m (4,3 ft)
Lance angle	± 45°
Working width	0-1,7 m (0-5,6 ft)
Working width extended	0-3,2 m (0-10,5 ft)
Drive source	Electric engine 3 phase 5,5 kW 400 VAC 16A (other on request)

// COMPATIBLE ACCESSORIES

Rotolance 2500 LT
Extension kit LT
PCM Carrier

// EXAMPLES OF APPLICATIONS

Parking garages
Buildings/structures
Tunnels
Nuclear plants
Hydropower plants
Petrochemical plants
Waste water plants
Industrial cleaning

aquajet.se