

AQUA SPINE

EMBRACE THE IMPOSSIBLE



aquajet.se

GROW A BACKBONE

The AQUA SPINE is an innovative multi-modular system for all surfaces that may be inaccessible for AQUA CUTTER robots. It's used extensively on shore and offshore constructions as well as hydro- and nuclear power plants. In other words, the power of the AQUA SPINE can turn seemingly impossible tasks into new possibilities.

The system can be positioned directly on concrete by anchor bolts or supported by carriers such as hydraulic platforms, cranes and scaffoldings. It can be tailored, assembled and modified for specific tasks according to your own specifications. All power and control

functions are provided by a standard Power Control Unit (PCU) or by any of our AQUA CUTTER robots.

STAYING ON TRACK

The AQUA SPINE has two different rail systems: DUAL or TRIPLE. Both are interchangeable within the system. You can use DUAL in confined areas or when you have several accessible attachment points to fix the rail. The TRIPLE rail is used for longer free span, up to 6 meters between the supports, horizontally or free standing.

TRIPPLE RAIL

Up to 6 meters between fixing points.



// START KIT

As standard the Aqua Spine is delivered as a free-standing unit that can be placed wherever preferred. It is delivered with support legs that can be bolted to the floor, a wall or the ceiling. It can then be supplemented to fit any task you can imagine.



// RESIZABLE

The length and width of the Aqua Spine are very easy to adapt to different situations. Just add or remove Spine sections or roller beam sections and start the operation.



// PILLARS

The Aqua Spine can be equipped with a Circular Power Head to operate pillars above or below water. Pillar clamps are available manual with straps or fully hydraulic.



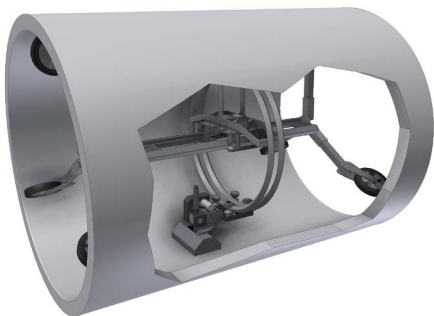
DUAL RAIL

Up to 2 meters between fixing points.



// PARAPET BEAM

Brackets for mounting the Aqua Spine directly to the surface saves a lot of space to achieve special tasks.



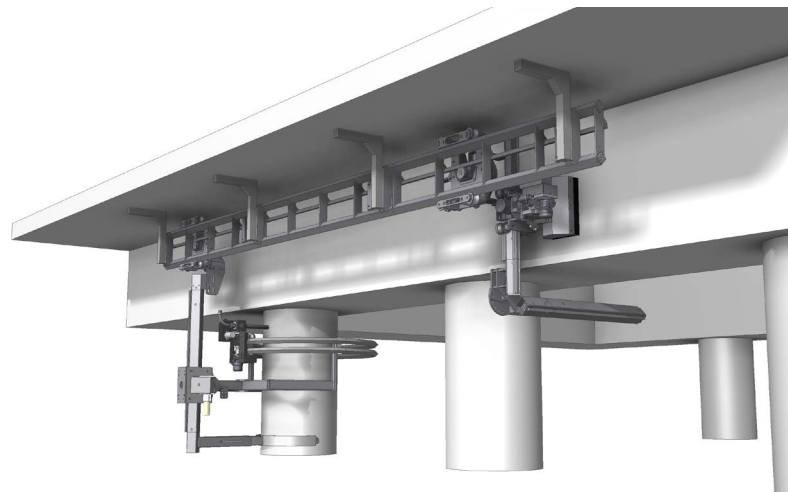
// EASY TO ADAPT

Thanks to the Aqua Spines design with a single feed beam it is very easy to adapt to a wide range of applications.



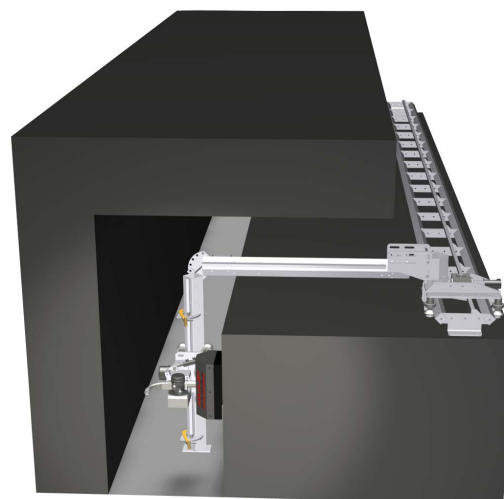
// SCAFFOLDING

The Aqua Spine can easily be supported by an existing scaffolding structure.



// BERTH / PIER

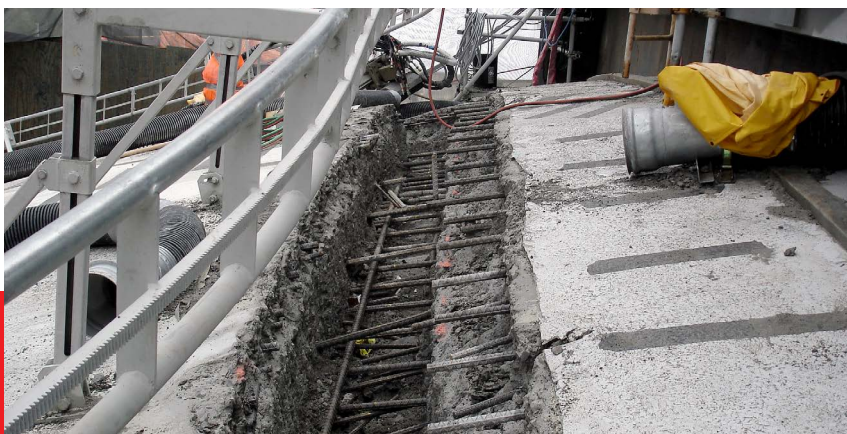
The Aqua Spine can be bolted to almost any surface and can also be operated under water.



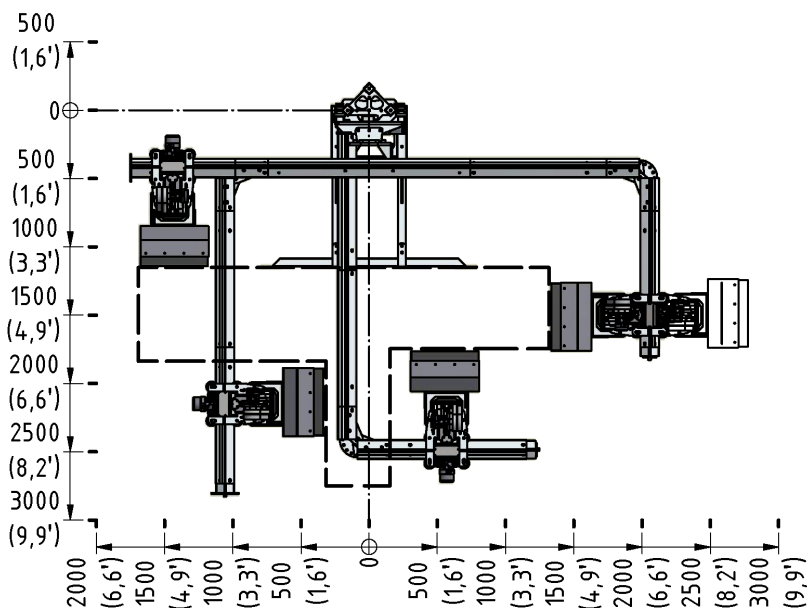
// NARROW SPACES

Thanks to the modular design the Aqua Spine can be brought in through narrow openings and also operate in very narrow spaces.

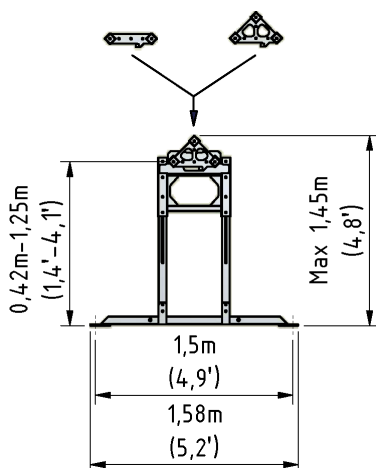
aquajet.se



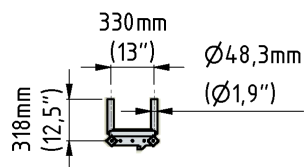
SPECIFICATIONS



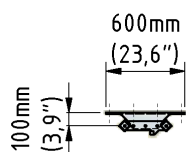
// SUPPORT LEGS



// SCAFFOLDING



// BOLTED BRACKETS



// TECHNICAL DATA

Approx. length _____ 1,0-6,0 m (3,3-19,7 ft)
 Approx. width _____ 1,0-3,0 m (3,3-9,8 ft)
 Cutting length _____ 1,0-6,0 m (3,3-19,7 ft)
 Control source _____ AQUA CUTTER robot or PCU

Other sizes and configurations are available upon request.

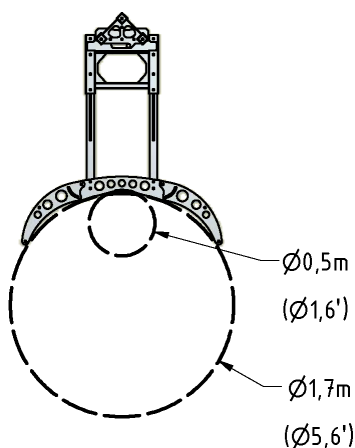
// COMPATIBLE PRODUCTS

AQUA CUTTER 410A
 AQUA CUTTER 410V Tunnel Kit
 AQUA CUTTER 710H
 AQUA CUTTER 710V
 PCM Carrier
 CIRCULAR POWER HEAD

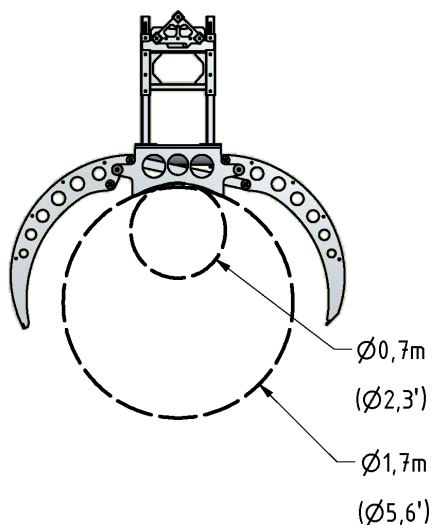
// EXAMPLES OF APPLICATIONS

Berth/piers
 Hydropower plants
 Pillars/piles
 Nuclear plants
 Chimneys

// PILLAR CLAMPS



// HYDRAULIC PILLAR CLAMPS



aquajet.se